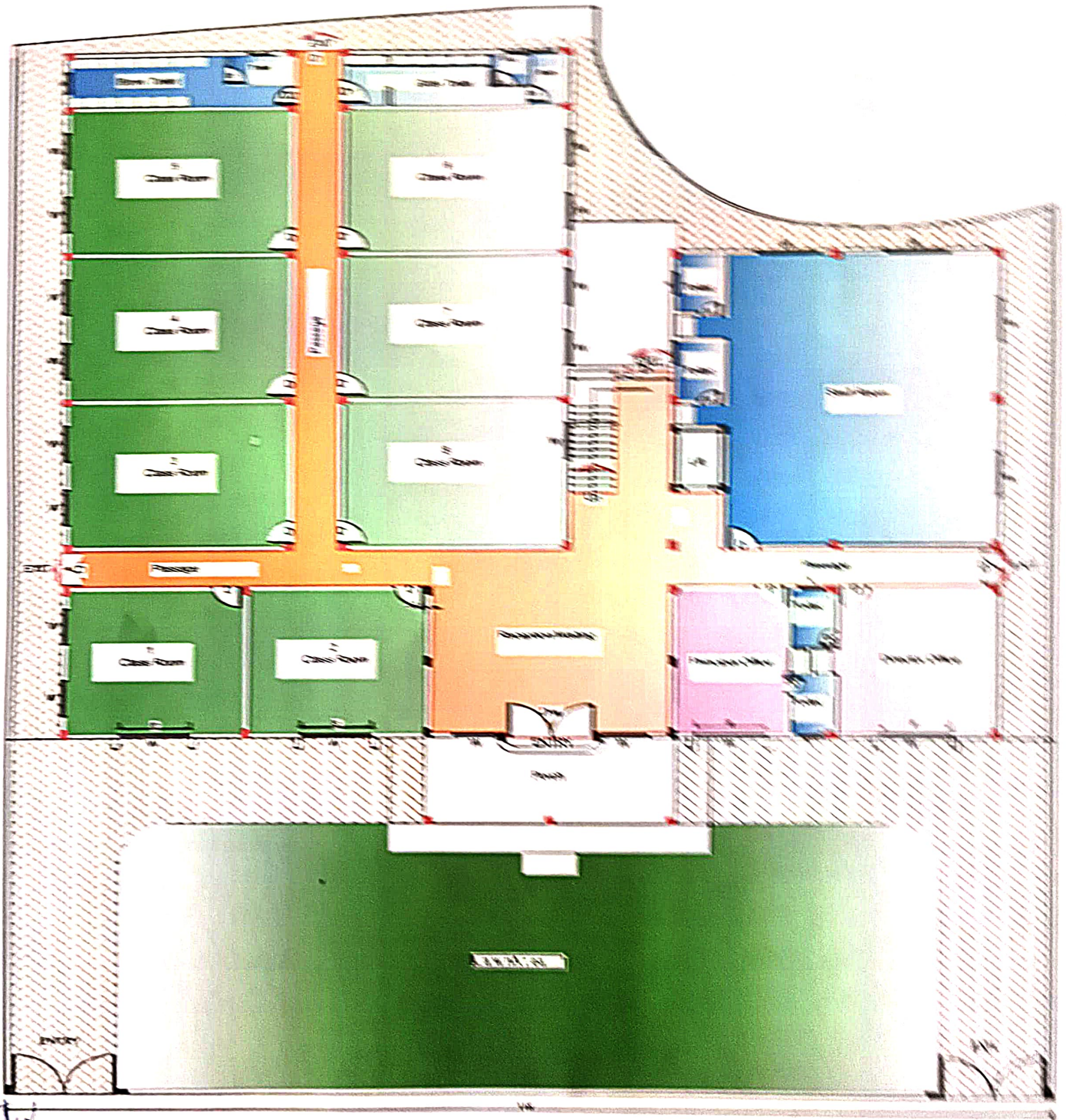


# EXIT MAP OF MDS INTERNATIONAL SCHOOL, V. V. VEER, STREET NO - 1, MOHA, RAIPUR (C. G.)



*Author*  
R Singh

AUTHORISED SIGNATORY  
IDEAL EDUCATION AND WELFARE SOCIETY

Working Plan	Project Name	Scale & Assurances
Ground Floor Plan Slab Area = 9573.00 Sqft.	Proposed Classroom Block Part of Smt. Anand Kanya School, Moha, District of V.V. Veer, Raipur (C.G.)	Scale: 1/4" = 1'-0" I am, the Architect, responsible for the design and construction of the above structure and I hereby certify that the same is in accordance with the provisions of the relevant laws and regulations.